



# SHOVEL-READY WITH ROOM TO GROW

## — WILLMAR INDUSTRIAL PARK —

Businesses ready to expand and build should consider the expanding Industrial Park in Willmar, Minnesota. In 2016 it gained shovel-ready status, a certification by the Minnesota Department of Employment and Economic Development (DEED), that means the planning, zoning, surveys, title work, environmental studies, soils analysis and infrastructure engineering are complete to start construction.

The park is just two miles from the Willmar airport, which has available hangar space and a modern terminal building. It is also a transportation hub with north/south connections via US Highway 71 and MN Highway 23 and east/west connections via US Highway 12. Plans to add direct rail car access to the Willmar Industrial Park were also recently announced. The site is close to the Willmar Rail Connector & Industrial Access Project (Willmar Wye). Over 30 companies already call Willmar Industrial Park home, including Jennie-O Turkey Store, Select Genetics, Mills Parts Center, Willmar Electric Service, RELCO, Magnum Trucking, Dooley's Petroleum and Chappell Central. FedEx Ground started construction in November 2021 on a 217,000 square foot distribution center. The \$30 million project is one of the largest the Industrial Park has seen in recent years.

one of only 48 shovel-ready industrial parks in Minnesota



zoned I-1 light industry



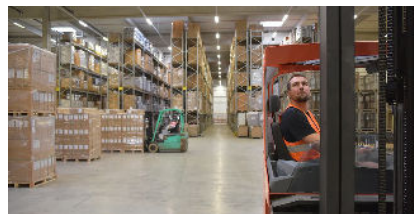
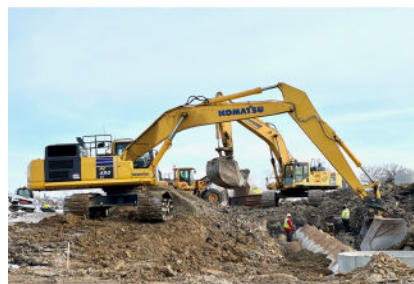
easy access to US Highways 12, 71 and MN Highway 23



18 platted lots available



Access to airport and tier 1 rail



**Contact us:**  
edc@kandiyohi.com  
toll-free (866) 665-4556  
(320) 235-7370  
222 20th St. SE  
Willmar, MN 56201

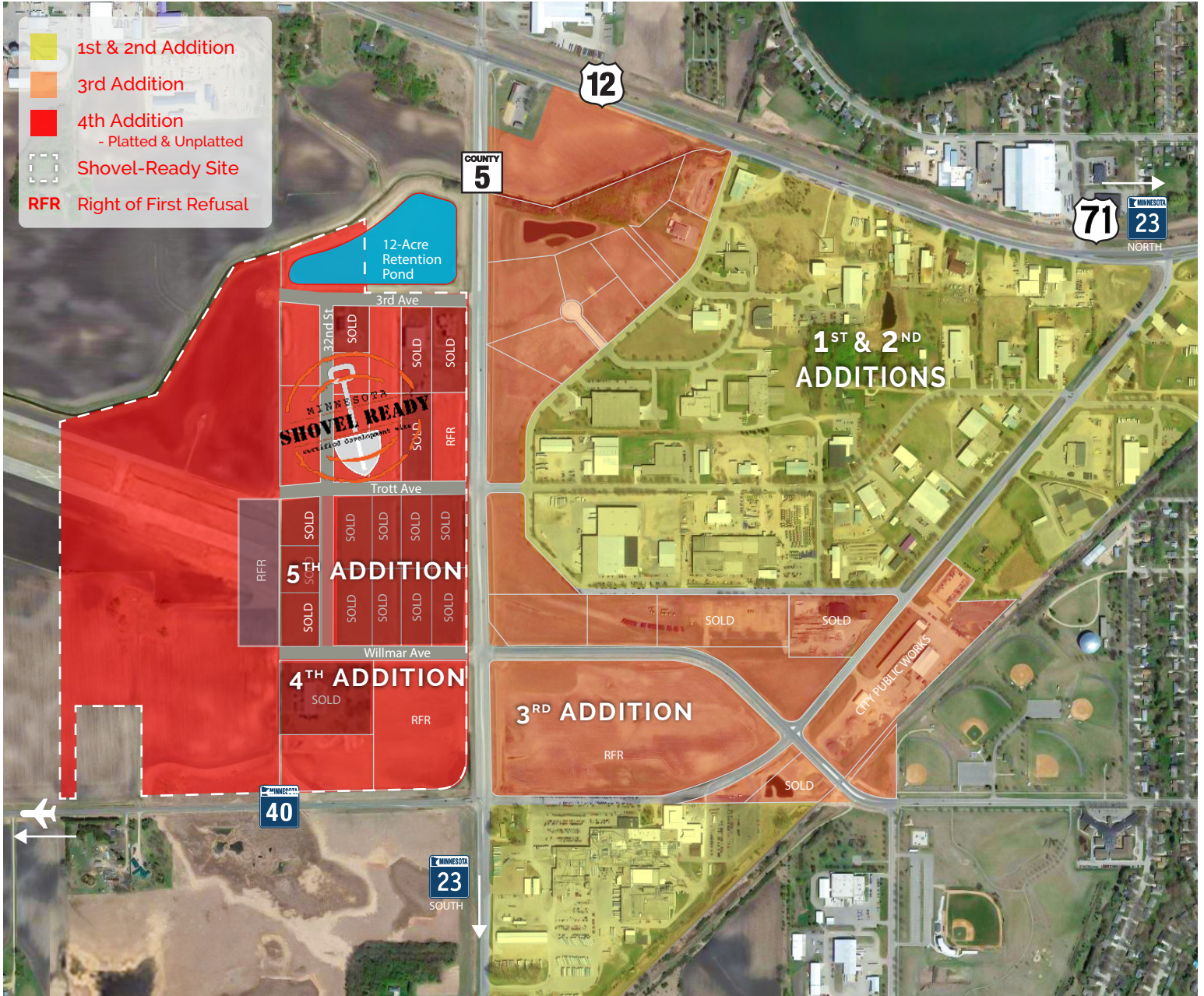
**Visit us:**  
kandiyohi.com

**Executive Director**  
Aaron Backman  
aaron@kandiyohi.com

**Business Development Manager**  
Sarah Swedburg  
sarah@kandiyohi.com

# A CLOSER LOOK

## WILLMAR INDUSTRIAL PARK



### Available:

**135** acres

**55** acres Shovel Ready

**18** lots

**1.4 - 80.3** acre lots



**Contact us:**  
[edc@kandiyohi.com](mailto:edc@kandiyohi.com)  
 toll-free (866) 665-4556  
 (320) 235-7370  
 222 20th St. SE  
 Willmar, MN 56201

**Visit us:**  
[kandiyohi.com](http://kandiyohi.com)

**Follow us:**  
 Facebook: Kandiyohi County and City of Willmar EDC  
 LinkedIn: Kandiyohi and City of Willmar EDC  
 Twitter: Kandiyohi County EDC | @KandiWillmarEDC