

**KANDIYOHI COUNTY AND CITY OF WILLMAR ECONOMIC DEVELOPMENT COMMISSION (EDC)
AGRICULTURE AND RENEWABLE ENERGY DEVELOPMENT (AG) COMMITTEE**

MINUTES

November 17, 2016

Christianson PLLP, Willmar

Present: Arvind Auluck-Wilson, Rollie Boll, Jon Folkedahl, Kevin Halvorson, Dustin Kotrba, Kim Larson, Bruce Reuss and Dan Tepfer

Excused: Dan Lippert and Ian Graue

Absent: John Duevel, Larry Konsterlie and Keith Poier

Guest: Kathy Schwantes

Staff: Connie Schmoll, Business Development Specialist

Vice Chair Kevin Halvorson called the meeting to order at 7:35 a.m. The agenda was approved as presented.

MINUTES

IT WAS MOVED BY Rollie Boll, SECONDED BY Dustin Kotrba, to approve the minutes of the July 21 and August 18, 2016 meetings as presented. MOTION CARRIED.

PRESENTATION

Kathy Schwantes of Mid-Central Research and Outreach Center (MCROC) provided a slide presentation (see attached) to report on the programs and staff at MCROC, which houses a research team from the University of Minnesota (U of M) College of Veterinary Medicine and Southwest Regional Extension Services. Schwantes is Director of both programs at MCROC, which is located at the MinnWest Technology Campus in Willmar. Schwantes reported that Cristian Flores Figueroa and Jeanette Munoz Aguayo, a husband and wife team who conducts research at MCROC, received the Unsung Heroes Award from the Minnesota Turkey Growers Association this year for their work during the avian influenza outbreak in the state. A new program that Schwantes introduced is the Minnesota 4-H Science of Agriculture Challenge program. Participants work with a mentor to research and make suggestions for solutions to a real life problem related to agriculture. Schwantes also reported on a new service through a Biosecure Entry Education Trailer that can go to a poultry farm to provide a location for managers to develop, assess and practice biosecurity protocols for poultry barns and employees to practice protocols and techniques in a safe location. Schwantes finished with reporting on the meeting facilities available for use at MCROC. MCROC has a multimedia room that seats up to 50 people and can be used at no cost for U of M-related meetings. In addition, there is a meeting room that seats 8 and one that seats 10, both of which can be reserved and used.

REPORTS

West Central Angel Fund I. Schmoll reported that after several planning meetings in a three-month period, there has been a break allowing time for a team of four group leaders to work with the consultant and attorney to draw up the final legal documents, including the PPM. As soon as the documents are completed to their standards, the first organizational meeting will be scheduled. If all goes as planned, the group will be legally established by the end of the year. Start-up businesses have been inquiring about making a presentation to the group. Schmoll has been keeping a list of the companies in order to inform them of the application procedures for funding when such procedures are in place.

Ag Producers Survey Subcommittee. The survey subcommittee met in October and finalized the survey questionnaire. Several changes were made to include current issues. Jim Molenaar will once again write the report for the project. So far, \$2,750 has been secured in contributions toward the project and \$3,500 is in the EDC's budget in 2017 to support the Ag Producers Survey project. Thirty volunteers are needed and will conduct the surveys in groups of two—just over ten people are committed at this time. Schmoll encouraged all committee members to participate. Volunteer training is scheduled for January 11, 2017 at 4:00 p.m. and January 13, 2017 at 12 noon. Kim Larson reported the subcommittee hopes to interview 60 agriculture producers between January 18 and February 24, 2017. County Commissioners and others are being contacted to try to determine who would be best to survey in order to get a representative group of producers in the county. The committee meets again on November 22, 2016.

Ag & Animal Science Conference. Schmoll attended the conference on September 20th. A booth was secured and setup to inform participants of agriculture in Kandiyohi County and the work of the EDC's Ag Committee. This committee also provided a \$2,000 sponsorship for the conference. The keynote speaker talked about GMOs and the importance of knowing and understanding the technologies and products involved.

U of M Showcase. The Showcase featured Dr. Tim Johnson, who spoke on his research at MCROC's Poultry Research Facility, Epitopix and the relationship with the U of M, and information about how to utilize the U of M for product commercialization. Schmoll attended the Showcase and assisted with planning and marketing the event.

UNFINISHED BUSINESS

2017 Ag Committee Chair/Vice Chair. A suggestion was made for the Vice Chair to move into the Chair position followed by Halvorson stating he would be willing to remain in the Vice Chair position. The current Chair was not in attendance to state his wishes. Arvind Auluck-Wilson made a motion that the current Chair and Vice Chair maintain their positions for 2017. There was no second to the motion. A nominating committee was formed, including Dan Tepfer, John Folkedahl and Connie Schmoll. They will contact members and bring back a slate of candidates for the two positions to be voted upon at the December meeting.

2016-2017 Goals. Schmoll provided a written report and led a review of the progress on the committee goals. With work yet to be completed on ag education and public relations, Auluck-Wilson suggested mentoring or working with youth; perhaps partnering with the Minnesota 4-H Youth Science of Agriculture Challenge program or creating a youth mentorship program of our own. Larson

suggested the committee discuss ag education opportunities and plans and have a member of the EDC's Marketing and Public Relations Committee present at the December meeting to coordinate efforts. Schmoll agreed to contact Trish Sheehan, facilitator of the Minnesota 4-H Youth Science of Agriculture Challenge program to inquire about partnership opportunities. Schmoll will also ask a representative of the EDC's Marketing and Public Relations Committee (perhaps Aaron Backman and/or the committee chair) to attend the December meeting. Ag education/public relations will be an agenda item in December. Tepfer reported there is a group of organizations, including Kandiyohi Power Cooperative, that fund and have a booth at FarmFest. He will check if there is room to allow the EDC's Ag Committee to also participate or have promotional materials at their booth in 2017. Larson also suggested this committee have a booth at the West Central Ag Sales Association Show in March as was done in the past. Schmoll will check into the cost and availability.

NEW BUSINESS

Tepfer reported the Midwest Farm Energy Conference is scheduled for June 13-14, 2017 and will be held at the West Central Research and Outreach Center in Morris. He is on the planning committee and encouraged members of this committee to attend.

COMMUNITY HAPPENINGS

Dustin Kotrba reported that Christianson & Associates now bears the new name "Christianson PLLP." We will see the changes in materials soon. With the work done at Christianson on renewable energy projects, they are interested in what the Trump administration will do with standards and programs to promote renewable energy.

A discussion was held on a new dairy farm planned for Chippewa County and a possible need for additional processing capacity in the near future. The committee supports the EDC's promotion of Kandiyohi County for such a facility.

ADJOURNMENT—There being no further business, the meeting was adjourned at approximately 9:10 a.m.

NEXT MEETING—The next meeting is **7:30 a.m., Thursday, December 22, 2016** at Christianson PLLP, Willmar.



UNIVERSITY OF MINNESOTA | EXTENSION

MAKING A DIFFERENCE IN MINNESOTA: ENVIRONMENT + FOOD & AGRICULTURE + COMMUNITIES + FAMILIES + YOUTH

Kandiyohi County & City of Willmar Economic Development Commission Ag Committee

NOVEMBER 17, 2016

© 2016 Regents of the University of Minnesota. All rights reserved.



UNIVERSITY OF MINNESOTA | EXTENSION

MAKING A DIFFERENCE IN MINNESOTA: ENVIRONMENT + FOOD & AGRICULTURE + COMMUNITIES + FAMILIES + YOUTH

Mid-Central Research and Outreach Center

Meet the Team!

© 2016 Regents of the University of Minnesota. All rights reserved.

Rebecca Chelene

SNAP-Ed Educator, Spanish
Phone: 320-235-0726, ext. 2010
Email: rjspanie@umn.edu



If you need help with:

- finding FREE health & nutrition programming for low income kids, teens, adults, seniors, parents and/or families
- starting a wellness team or revitalizing an existing one
- getting your family to eat vegetables



UNIVERSITY OF MINNESOTA | EXTENSION

© 2016 Regents of the University of Minnesota. All rights reserved.

Abdulahi Dohe

SNAP-Ed Educator, Somali
Phone: 320-235-0726, ext. 2003
Email: amdohe@umn.edu



If you need help with:

- finding FREE health & nutrition programming for low income kids, teens, adults, seniors, parents and/or families
- starting a wellness team or revitalizing an existing one
- getting your family to eat vegetables



UNIVERSITY OF MINNESOTA | EXTENSION

© 2016 Regents of the University of Minnesota. All rights reserved.

Anne Dybsetter

Extension Educator

Health & Nutrition

Phone: 320-235-0726, ext. 2012

Email: adybsett@umn.edu



If you need help with:

- ways to make communities healthier
- finding resources for healthier food shelves
- learning about the Southwest region's Local Food Systems Work Group (of the RSDP)

 UNIVERSITY OF MINNESOTA | EXTENSION

© 2016 Regents of the University of Minnesota. All rights reserved.

Toby Spanier

Extension Educator

Leadership & Civic Engagement

Phone: (507) 337-2815

Email: spani001@umn.edu



If you need help with:

- growing leader & follower skills, confidence & willingness to lead the changes needed in your community organization
- increasing the level & depth of public engagement in the opportunities, issues & problems you are facing
- knowledge and skills to effectively facilitate your team or group to get needed results

 UNIVERSITY OF MINNESOTA | EXTENSION

© 2016 Regents of the University of Minnesota. All rights reserved.

Christy Kallevig

Alumni Program & Cohort Coordinator

Phone: 320-235-0726, ext. 2018

Email: kallevig@umn.edu



If you need help with:

- developing leadership & civic engagement programming for your organization, community or county
- connecting with alumni from a U of MN Leadership & Civic Engagement program (MARL, ULAA, etc.)
- sharing opportunities with a statewide audience of people interested in leading & serving their communities



UNIVERSITY OF MINNESOTA | EXTENSION

© 2016 Regents of the University of Minnesota. All rights reserved.

Trisha Sheehan

Extension Educator

4-H Youth Development

Phone: 320-235-0726, ext. 2007

Email: tsheehan@umn.edu



If you need help with:

- improving program quality in youth programs
- training for staff and volunteers on topics related to positive youth development
- starting a new 4-H club



UNIVERSITY OF MINNESOTA | EXTENSION

© 2016 Regents of the University of Minnesota. All rights reserved.

Jodi DeJong-Hughes

Extension Educator

Soils and Crops

Phone: 320-235-0726, ext. 2006

Email: dejon003@umn.edu



If you need help with:

- ways to improve soil health and productivity
- reducing tillage, erosion and soil compaction



UNIVERSITY OF MINNESOTA | EXTENSION

© 2016 Regents of the University of Minnesota. All rights reserved.

Nicole Kenney Rambo

Extension Educator

Beef Feedlot

Phone: 320-235-0726, ext. 2009

Email: nmkenney@umn.edu



If you need help with:

- cattle production
- cattle management
- beef nutrition



UNIVERSITY OF MINNESOTA | EXTENSION

© 2016 Regents of the University of Minnesota. All rights reserved.

Sarah Schieck

Extension Educator

Swine

Phone: 320-235-0726, ext. 2004

Email: schi0466@umn.edu



If you need help with:

- Pork Quality Assurance certification & Site Assessments
- Transport Quality Assurance certification
- Common Swine Industry Audit preparation



UNIVERSITY OF MINNESOTA | EXTENSION

© 2016 Regents of the University of Minnesota. All rights reserved.

Pauline Van Nurden

Extension Educator

Ag Business Management

Phone: 320-235-0726, ext. 2008

Email: pvannurd@umn.edu



If you need help with:

- farm financial management
- farm transfer and estate planning
- women in agriculture



UNIVERSITY OF MINNESOTA | EXTENSION

© 2016 Regents of the University of Minnesota. All rights reserved.

Abby Neu

Extension Educator

Poultry

Phone: 320-235-0726, ext. 2019

Email: neux0012@umn.edu



If you need help with:

- on-farm biosecurity
- organizing poultry related workshops for decision makers, employees or allied industry
- hay harvesting



UNIVERSITY OF MINNESOTA | EXTENSION

© 2016 Regents of the University of Minnesota. All rights reserved.

Tim Johnson

Associate Professor of Microbiology, Poultry Extension

Department of Veterinary & Biomedical Sciences

Phone: 320-235-0726, ext. 2017

Email: joh04207@umn.edu



If you need help with:

- discussion of the spread of antibiotic resistance and disease as it relates to animal agriculture
- interest in infectious disease research projects in the region related to poultry or human health
- interest in training opportunities that can be provided by MCROC



UNIVERSITY OF MINNESOTA | EXTENSION

© 2016 Regents of the University of Minnesota. All rights reserved.

Cristian Flores Figueroa

Veterinary Research Lab

Assistant Scientist

Phone: 320-235-0726, ext. 2015

Email: flore170@umn.edu



If you need help with:

- use of the MCROC laboratory facilities by University PI & out of University entities
- research on avian pathogens in wild and domestic populations



UNIVERSITY OF MINNESOTA | EXTENSION

© 2016 Regents of the University of Minnesota. All rights reserved.

Jeannette Munoz Aguayo

Veterinary Research Lab

Assistant Scientist

Phone: 320-235-0726, ext. 2015

Email: munoz051@umn.edu



If you need help with:

- use of the MCROC laboratory facilities by University PI & out of University entities
- research on avian pathogens in wild and domestic populations

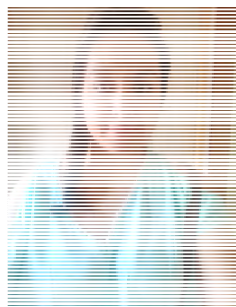


UNIVERSITY OF MINNESOTA | EXTENSION

© 2016 Regents of the University of Minnesota. All rights reserved.

Jessica Jimenez

Veterinary Research Lab
Junior Laboratory Technician
Phone: 320-235-0726, ext. 2015
Email: jjimenez@umn.edu



If you need help with:

- use of the MCROC laboratory facilities by University PI & out of University entities
- research on avian pathogens in wild and domestic populations



UNIVERSITY OF MINNESOTA | EXTENSION

© 2016 Regents of the University of Minnesota. All rights reserved.

Mary Jo Fox

Support Staff
Phone: 320-235-0726, ext. 2001
Email: foxxx055@umn.edu



If you need help with:

- scheduling a meeting room at MCROC
- contact information for someone at the University



UNIVERSITY OF MINNESOTA | EXTENSION

© 2016 Regents of the University of Minnesota. All rights reserved.

Kathy Schwantes
Regional Director, Southwest
Director of Operations
Phone: 320-235-0726, ext. 2002
Email: kschwant@umn.edu



If you need help with:

- educational opportunities
- research projects
- connecting with University resources



UNIVERSITY OF MINNESOTA | EXTENSION

© 2016 Regents of the University of Minnesota. All rights reserved.



UNIVERSITY OF MINNESOTA | EXTENSION
Driven to DiscoverSM

Thank you!

© 2016 Regents of the University of Minnesota. All rights reserved.

The University of Minnesota is an equal opportunity educator and employer. In accordance with the Americans with Disabilities Act, this PowerPoint is available in alternative formats upon request. Direct requests to 612-624-1222.

MAKING A DIFFERENCE IN MINNESOTA: ENVIRONMENT + FOOD & AGRICULTURE + COMMUNITIES + FAMILIES + YOUTH

Agriculture and Renewable Energy Development Committee

Mission

To sustain, identify and develop agriculture, agribusiness and renewable energy opportunities

Overall Goal of the Agriculture and Renewable Energy Committee

Target activities that leverage Kandiyohi County's assets in agriculture, with a special emphasis on Ag business, manufacturing, bioscience, technology, energy and research.

GROUP A:

1. Establish an ag investment group
 - a. Secure a minimum of 8 investors to lead the charge for a larger group by June 1, 2016.
 - i. Currently 31 founding members
 - b. Establish a fund by December 31, 2016 with a minimum of \$1MM for projects.
 - i. Committed capital exceeds \$1MM
 - c. Attend at least two Community Venture Network meetings to seek economic development projects for Kandiyohi County.
 - i. Attended CVN in August; scheduled to attend in December
 - ii. Currently writing proposal for a CVN introduced project
 - iii. Sent site information for a CVN introduced project
 - iv. Netzro, a CVN business, made a presentation to angel investors in October
 - d. Bring at least one agriculture or renewable energy related project to the investment group for consideration by December 31, 2016.
 - i. Projects ready to present when application process is ready.
2. Plan for a 2017 Ag Producers Survey
 - a. Develop a timeline and select interview tools by October 31, 2016.
 - i. Survey tool is finalized; timeline finalized; survey to be conducted in February 2017.
 - b. By December 2016, secure the funding needed to complete the project.
 - i. \$2750 secured from contributions and EDC budgeted for \$3500, another \$1450 needs to be secured.
 - c. Secure at least 20 volunteers by December 31, 2016, to assist with interviews.
 - i. Currently 8 volunteers secured

3. Support and conduct ag education including developing a public relations strategy
 - a. Participate in the 2016 Animal Science Conference with a booth and exhibit to showcase agriculture and renewable energy in Kandiyohi County.
 - i. Sponsored and provided booth with materials on September 20, 2016.
 - b. Attend Farm Fest 2016 in August to determine if there is opportunity to share and plan for a booth at the 2017 Farm Fest Show.
 - i. Attended FarmFest 2016 – did not find partner to share booth
 - c. Network with and assist ag interest groups, such as the Minnesota Dairy Association, Corn Growers, Clean Energy Resource Teams, the PACE program.
 - i. Ongoing networking with CERTS, PACE, Corn Growers. Broadband issues discussed with Corn Growers; they provided letter of support for grant application.
4. Assist with deployment of broadband into rural unserved areas of Kandiyohi County
 - a. Complete the Kandiyohi County Broadband Feasibility Study by August 15, 2016.
 - i. Communications Network Engineers (CNE) completed study on August 12, 2016. The study report was utilized in state grant application.
 - b. Identify specific needs for broadband access and speed including current and future communication needs for list to include in grant application by September 30, 2016.
 - i. Information secured in study and over 70 community contacts.
 - c. Identify and apply for at least one source of funding in 2016 to proceed with implementation of broadband in Kandiyohi County in 2017.
 - i. State Border-to-Border grant application submitted October 3, 2016. Awards may be announced in December, 2016.
 - d. Secure partnership with one or more broadband provider(s) to move forward with broadband network deployment in Kandiyohi County.
 - i. Consolidated Telecommunications Company (CTC) has partnered with Kandiyohi County to create a shovel-ready project and apply for state broadband funds.

GROUP B:

1. Support development of additional sources and uses for area food products
 - a. Submit at least one reference letter to support funding requests for Historic 313's Food Hub by December 31, 2016.
 - i. Letter of support submitted on behalf of Historic 313 in February 2016.
 - b. Follow-up with grant application made to USDA to assess if further reference support is needed by October 2016.

2. Continue to monitor and promote Kandiyohi County's involvement in the Minnesota Turkey Research and Development Facility and Minnesota Dairy Training, Research and Consumer Education Facility
 - a. Support MCROC and its work on turkey research.
 - i. Created MWTC marketing materials featuring the new sequencing machine at MCROC Research facility.
 - ii. Assisted with U of M Showcase
 - iii. Facilitated tours of MWTC/MCROC
 - b. Make at least one connection with University of Minnesota Turkey Research representative by September 30, 2016.
 - i. Inquiry made and discovered there are no further plans at this time.
 - c. Continue to monitor progress of the Dairy Facility.
 - i. No updates received.