

THE WATER VIEW BUSINESS PARK

LOCATED IN: THE SOUTHWEST 1/4 AND GOVERNMENT LOTS 1 AND 2 OF SECTION 23,
TOWNSHIP 119 NORTH, RANGE 35 WEST, KANDIYOHI COUNTY, MINNESOTA

TOTAL AREA: 115.01 ACRES

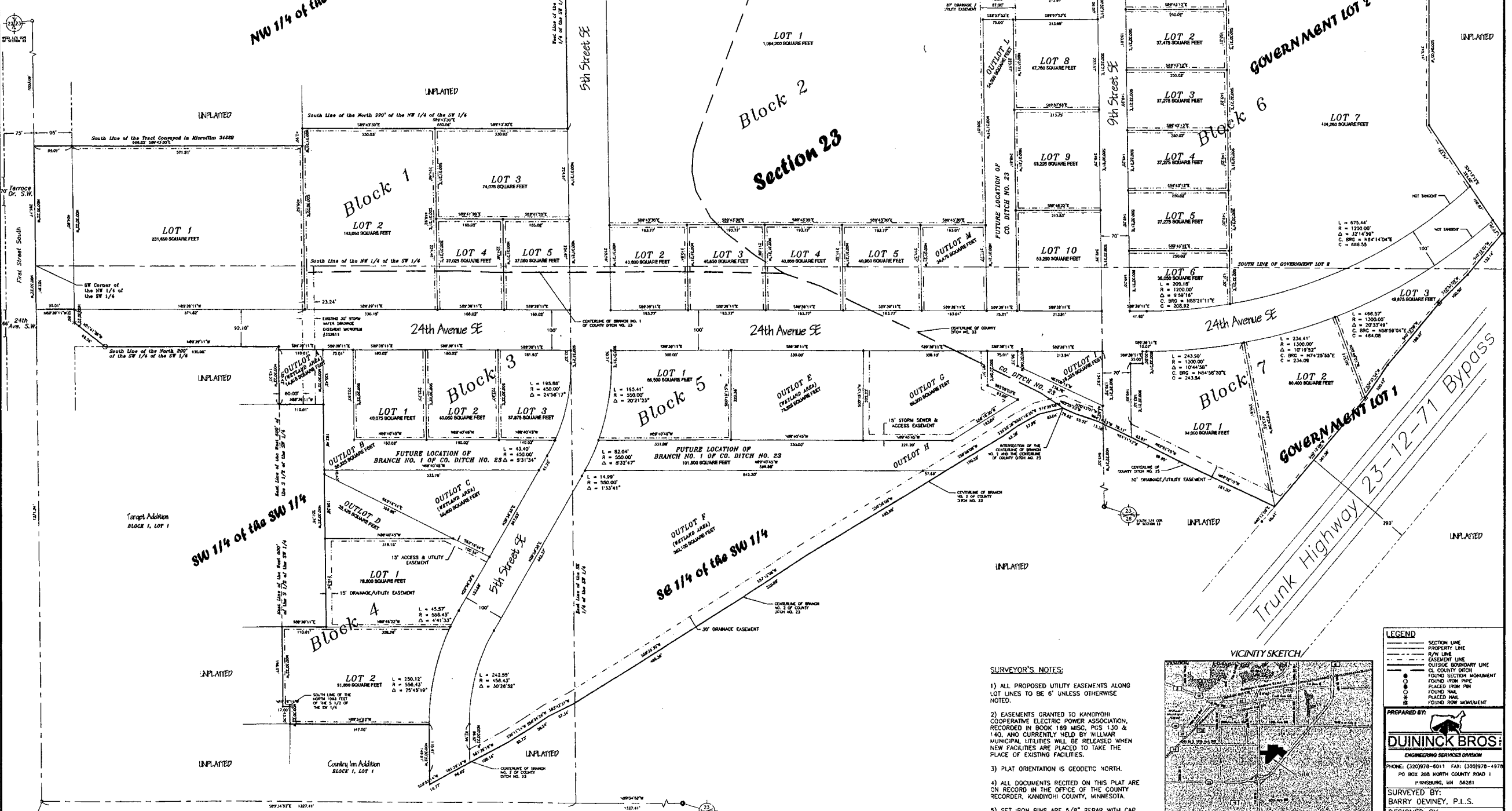
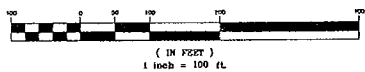
OWNERS:

DUININCK DEVELOPMENT, INC.
P.O. BOX 208
PRINSBURG, MN 56281

DUININCK BROS. INC.
P.O. BOX 208
PRINSBURG, MN 56281

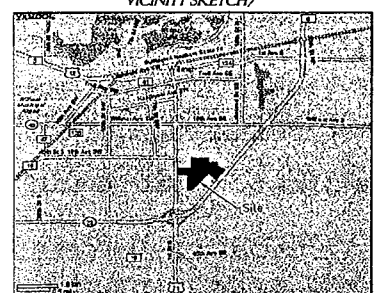
DUININCK COMPANIES, A MINNESOTA
GENERAL PARTNERSHIP FORMERLY
DUININCK BROTHERS & GILCHRIST AND
DUININCK BROTHERS AND GILCHRIST
P.O. BOX 208
PRINSBURG, MN 56281

GRAPHIC SCALE



SURVEYOR'S NOTES:

- 1) ALL PROPOSED UTILITY EASEMENTS ALONG LOT LINES TO BE 6' UNLESS OTHERWISE NOTED.
- 2) EASEMENTS GRANTED TO KANDIYOHI COOPERATIVE ELECTRIC POWER ASSOCIATION, RECORDED IN BOOK 189 MISC. PGS 130 & 140, AND CURRENTLY HELD BY HILMAR MUNICIPAL UTILITIES WILL BE RELEASED WHEN NEW FACILITIES ARE PLACED TO TAKE THE PLACE OF EXISTING FACILITIES.
- 3) PLAT ORIENTATION IS GEODETIC NORTH.
- 4) ALL DOCUMENTS RECITED ON THIS PLAT ARE ON RECORD IN THE OFFICE OF THE COUNTY RECORDER, KANDIYOHI COUNTY, MINNESOTA.
- 5) SET IRON PINS ARE 5/8" REBAR WITH CAP MARKED P.L.S. 42622.



LEGEND

---	SECTION LINE
---	PROPERTY LINE
---	R/W LINE
---	EASEMENT LINE
---	OUTSIDE BOUNDARY LINE
---	CL COUNTY DITCH
---	FOUND SECTION MONUMENT
---	FOUND IRON PIPE
---	PLACED IRON PIPE
---	FOUND NAIL
---	PLACED NAIL
---	FOUND ROW MONUMENT
---	FOUND ROW MONUMENT

PREPARED BY:
DUININCK BROS.
ENGINEERING SERVICES DIVISION
PHONE: (320)978-6011 FAX: (320)978-4976
PO BOX 208 NORTH COUNTY ROAD 1
PRINSBURG, MN 56281

SURVEYED BY:
BARRY DEVINYE, P.L.S.
DESIGNED BY:
JASON VER STEEC, P.E.